



 **FLUIDOTEHNIC**

DEVICES AND SYSTEMS FOR CENTRAL LUBRICATION

CATALOG OF DEVICES

 www.fluidotehnic.com



LUBRICATION TECHNIQUE

CATALOG OF DEVICES

ABOUT COMPANY	4-5
PUMPS FOR OIL LUBRICATION	6-7
FILTERS (FOR OIL LUBRICATION)	8-9
FLOW INDICATORS	10-11
ELECTRIC MOTOR MULTILINE PUMPS	12-19
ELECTRIC MOTOR PUMPS	20-22
ELECTRIC MOTOR PUMP FOR CENTRAL SUPPLEMENT	23
ELECTRIC MOTOR PUMP FOR GREASE TRANSFER	24-25
PNEUMATIC PUMP FOR LUBRICATION	26
PNEUMATIC PUMP FOR OIL DRAFT	27
DUAL LINE HAND PUMP	28
HAND PUMP (FOR LUBRICANT TRANSFER)	29
FOOT PUMP (FOR GREASE LUBRICATION)	30
POWER UNIT FOR MULTILINE LUBRICATION	31-33
UNIT FOR DUAL LINE LUBRICATION	34-37
ELECTRIC COMPACT UNIT (FOR SINGLE GREASE LUBRICATION)	38
PNEUMATIC PUMP FOR SINGLE LUBRICATION	39
PNEUMATIC UNIT FOR SINGLE LUBRICATION ON CART	40
ELECTRIC CONTROL UNIT	41
DOSING DISTRIBUTORS	42-45
CHANGE-OVER VALVES	46-52
CONTROL DEVICES	53-55
PRESSURE RELIEF VALVE	56
PRESSURE LINE FILTER (FOR GREASE LUBRICATION SYSTEMS)	57
GUN FOR LUBRICATION	58





- FLUIDOTEHNIC's production program is based on its own development. Thanks to that, all the products are the result of the engineering staff work, as well as the quality and skilled workers in manufacturing and installation. Each serial product during the conquest passes through the phase of prototype development, functional tests and check in real operating conditions. Following step is removal of all possible defects and then, based on that, test series is produced. This is how we achieve high quality of manufactured devices. In case of the individual production, after the functional testing, we deliver the product to the customer.
- Since its foundation FLUIDOTEHNIC Ltd. has been continuously investing both in the expansion of commercial building and the purchase of modern equipment for the production, control and techno-economic support. It is located in the industrial zone of Vrnjacka Banja, on a lot size ~ 2ha. It consists several buildings, connected into a functional whole area of 4000 m². The whole complex is adjusted to the environment- we are taking good care of health, work safety and environmental protection.





- Market research, device development, technical assistance and personnel training free of charge for all our customers is the main task of this service. Many years of experience in the development tasks of hydraulics, pneumatics and lubrication techniques, as well as the latest computer technology guarantee that our customers will get the optimum technical solution. During the development, every device passes precisely defined procedure, starting from making the design concept, followed by manufacturing and testing prototypes and going into production.
- It consists of several facilities and departments: foundry of non-ferrous metals, mechanical drive, locksmith department, installation and technical control. All operations from the casting to the final machining are performed with the universal and software machines. Control and assembly is 100%. When the assembly is finished, each device is being tested on the test stand and on the basis of the results it gets the appropriate certificates and guarantees. On each call of the user, service teams come in as soon as possible, with spare parts and the necessary tools, regardless of whether the equipment is in warranty or out of warranty period.

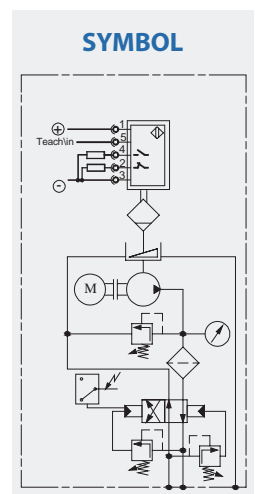
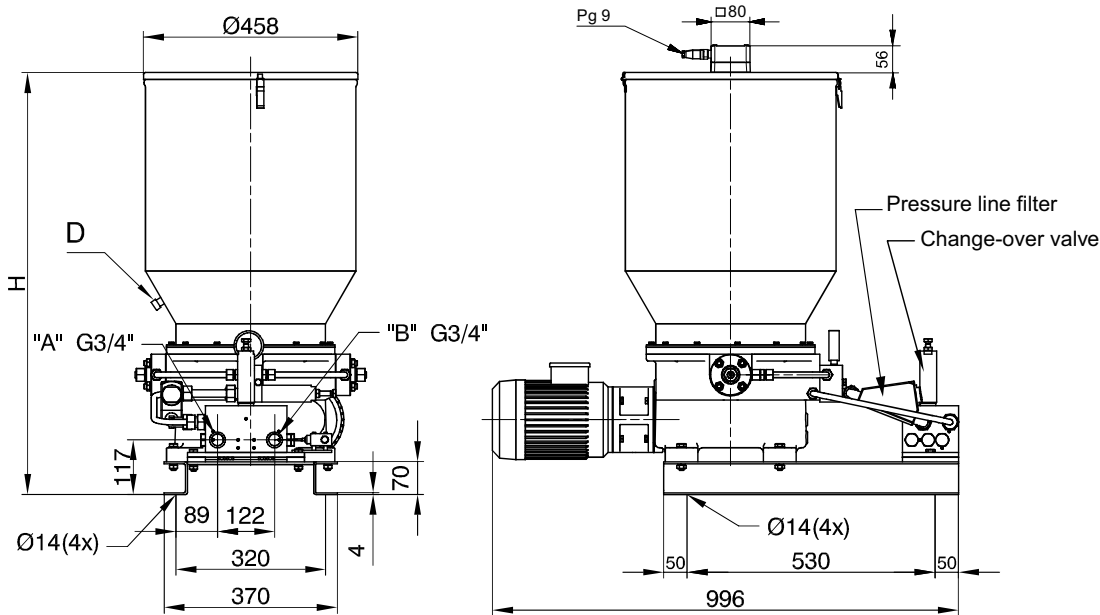


UNIT FOR DUAL LINE LUBRICATION (WITH HYDRAULIC CHAGE-OVER VALVE)



The compact unit is applied for oil and grease lubrication in two-line centralized systems. It is suitable for operation in very hard working conditions (excavators for surface exploitation, iron plants, cement works). In tank should be posed level indicator max/min (for automat.supplying). Pump with lubricant level indication have "AU" in code. Ultrasonic level indicator indicate 3 lubricant level in the tank, with the range according to customer requirements. There is 3 tank variants: 50, 80 and 100 dm³. The tank filled through the port D (with seals cone 24° DIN 3901/3902 M26x1,5), using the charging pump. This is recommended to avoid particles and air in lubricant. This piston pump is available in three variants regarding flow and working pressure. It is equipped with pressure gauge and pressure relief valve to prevent the overload. For lubrication of gear unit of the pump use hypoid oil. The oil level must be equal to down edge of filling port. The lubricant flows from the pump through the filter to the change-over valve. Hydraulic change-over valve is manage-regulating device. When the pressure in distributing line increases to the adjusting value (50 - 350bar), is performed automatically transfer of main line and lubrication cycle is completed. This is indicated by micro switch of electric indicator. Starting the pump begins the lubrication cycle in second line. This simplifies the control of whole lubrication system. The switching pressure can be adjusted by the screw (spanner gap 17) on the regulators housing.

The unit is equipped with a pressure gauge and pressure relief valve to prevent the overload. For lubrication of gear unit of the pump use hypoid oil. The oil level must be equal to down edge of filling port. The lubricant flows from the pump through the filter to the change-over valve. Hydraulic change-over valve is manage-regulating device. When the pressure in distributing line increases to the adjusting value (50 - 350bar), is performed automatically transfer of main line and lubrication cycle is completed. This is indicated by micro switch of electric indicator. Starting the pump begins the lubrication cycle in second line. This simplifies the control of whole lubrication system. The switching pressure can be adjusted by the screw (spanner gap 17) on the regulators housing.

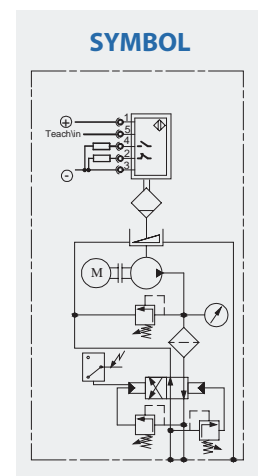
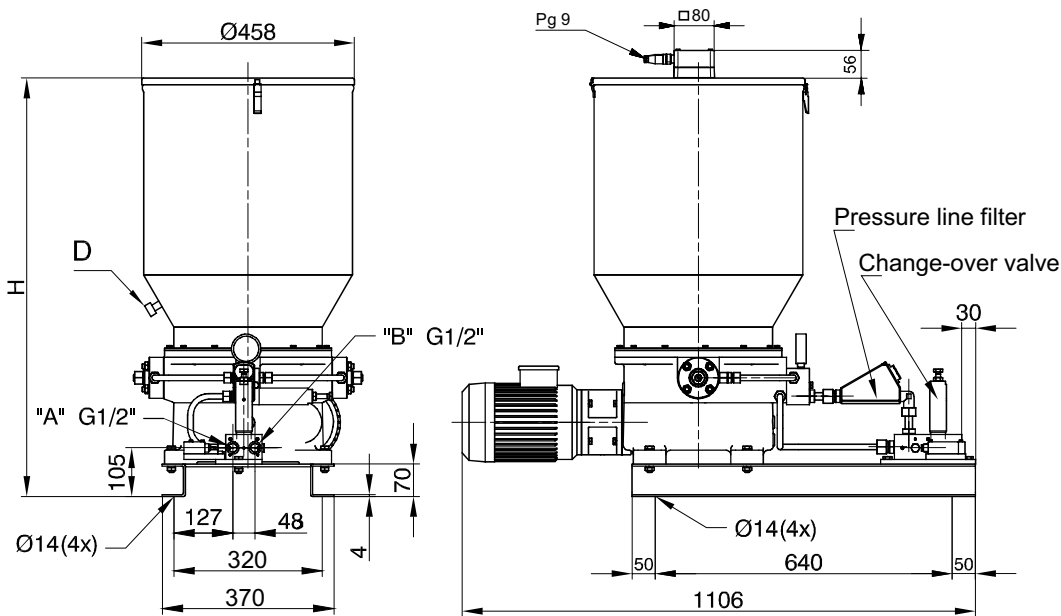


Ordering code	Flow cm ³ / min	Max. pressure bar	Fluid			Electric motor			Ultrasonic level indicator AU	Electric indicator	Tank volume dm ³	H	Mass kg
			Grease	Oil visc.	Temp.	Power	Rated speed	Voltage					
			NLGI	mm ² /s	°C	kW	rpm	V					
10 - 2100	500	250	≤3	>32	-25; +80	1,1	1410	3x400/50Hz	10 to 30V 200 mA 2xPNP NO/NC	220V/5A	50	682	114
10 - 2100-1											80	902	119
10 - 2100/1	300	300									50	682	114
10 - 2100/1-1											80	902	119

UNIT FOR DUAL LINE LUBRICATION (WITH HYDRAULIC CHAGE-OVER VALVE)



The compact unit is applied for oil and grease lubrication in two-line centralized systems. It is suitable for operation in very hard working conditions (excavators for surface exploitation, iron plants, cement works). In tank should be posed level indicator max/min (for automat.supplying). Pump with lubricant level indication have "AU" in code. Ultrasonic level indicator indicate 3 lubricant level in the tank, with the range according to customer requirements. There is 3 tank variants: 50, 80 and 100 dm³. The tank filled through the port D (with seals cone 24° DIN 3901/3902 M26x1,5), using the charging pump. This is recommended to avoid particles and air in lubricant. This piston pump is available in three variants regarding flow and working pressure. It is equipped with pressure gauge and pressure relief valve to prevent the overload. For lubrication of gear unit of the pump use hypoid oil. The oil level must be equal to down edge of filling port. The lubricant flows from the pump through the filter to the change-over valve. Hydraulic change-over valve is manage-regulating device. When the pressure in distributing line increases to the adjusting value (50 - 350bar), is performed automatically transfer of main line and lubrication cycle is completed. This is indicated by micro switch of electric indicator. Starting the pump begins the lubrication cycle in second line. This simplifies the control of whole lubrication system. The switching pressure can be adjusted by the screw (spanner gap 17) on the regulators housing.

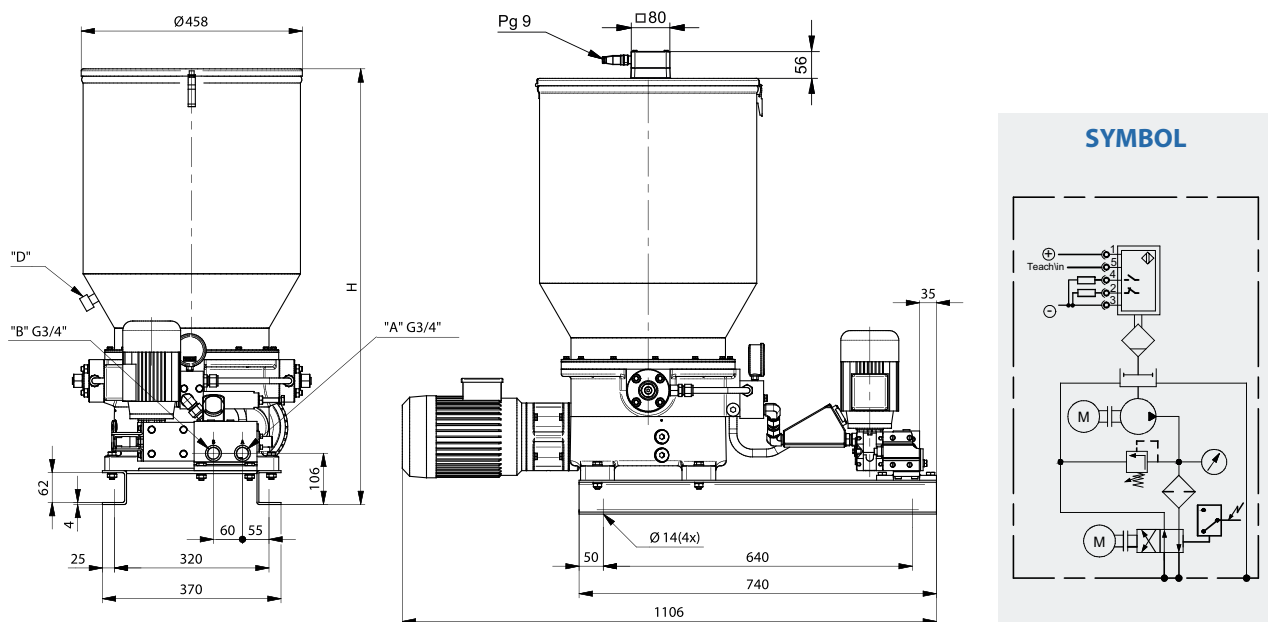


Ordering code	Flow cm ³ / min	Max. pressure bar	Fluid			Electric motor			Ultrasonic level indicator AU	Electric indicator	Tank volume dm ³	H	Mass kg
			Grease NLGI	Oil visc. mm ² /s	Temp. °C	Power kW	Rated speed rpm	Voltage V					
10 - 2100/2	150	350	≤3	>32	-25; +80	1,1	1410	3x400/50Hz	10 to 30V 200 mA 2xPNP NO/ NC	220V/5A	50	682	105
10 - 2100/2-1											80	902	110

UNIT FOR DUAL LINE LUBRICATION (WITH ELECTRIC DRIVEN CHANGE-OVER VALVE 400V)



The compact unit is applied for oil and grease lubrication in two-line systems. It is suitable for operation in very hard working conditions (excavators for surface exploitation, iron plants, cement works, etc.). Pump with lubricant level indication have "AU" in code. Ultrasonic level indicator indicate 3 lubricant level in the tank, with the range according to customer requirements. The tank filled through the port D (with seals cone 24° DIN 3901/3902 M26x1,5), using the charging pump. This is recommended to avoid particles and air in lubricant. This piston pump is equipped with pressure gauge and pressure relief valve to prevent the overload. For lubrication of gear unit of the pump use hypoid oil. The oil level must be equal to down edge of filling port. The lubricant flows from the pump through the filter to the change-over valve. When the pressure in distributing line increases to the adjusting value is performed automatically transfer of main line and lubrication cycle is completed. This is indicated by micro switch of electric indicator. Starting the pump begins the lubrication cycle in second line. This simplifies the control of whole lubrication system.



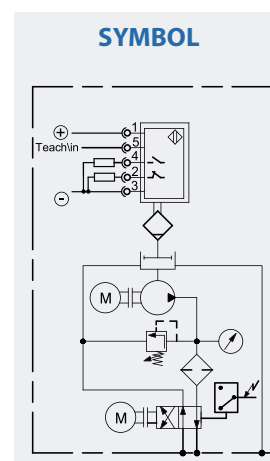
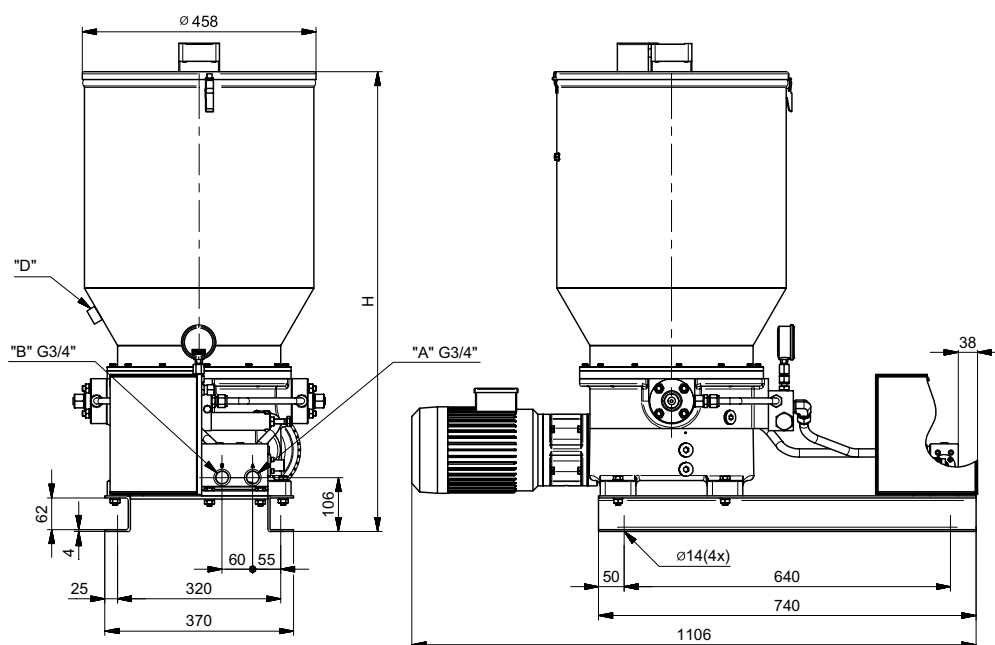
Ordering code		10-2110	10-2110-1	10-2110/1	10-2110/1-1	10-2110/2	10-2110/2-1
Lubricant	Oil viscosity	>32 mm ² /s					
	Grease NLGI	≤3					
	Temperature	-25 ; +80 °C					
Working pressure		250 bar		300 bar		350 bar	
Flow		500 cm ³ /min		300 cm ³ /min		150 cm ³ /min	
Electric motor of pump		1,1KW 3x400V 50Hz 1370 rpm					
Electric motor of change-over valve		0,09KW 3x400V 50Hz 1320 rpm					
Gear box ratio of change-over valve		100:1					
Switching time of change-over valve		2,3 s					
Electric indicator on change-over valve		max 220V 5A					
Ultrasonic level indicator		10 to 30V 200mA 2xPNP NO/NC					
Tank volume		50 dm ³	80 dm ³	50 dm ³	80 dm ³	50 dm ³	80 dm ³
Height H		682 mm	902 mm	682 mm	902 mm	682 mm	902 mm
Mass		105 kg	110 kg	105 kg	110 kg	105 kg	110 kg

UNIT FOR DUAL LINE LUBRICATION (WITH ELECTRIC DRIVEN CHANGE-OVER VALVE 24V DC/ 230V AC)



The compact unit is applied for oil and grease lubrication in two-line systems. It is suitable for operation in very hard working conditions (excavators for surface exploitation, iron plants, cement works, etc.) In the tank should be posed level indicator max/min (for automat. supplying). If it is required pump with level indicator, to primary code should add „AU“. Ultrasonic level indicator indicate 3 lubricant level in the tank, with the range according to customer requirements. There is many tank variants: 40, 50, 60, 80 and 100 dm³. This is a piston pump. It is equipped with manometer, pressure relief valve to prevent overload and filter fineness 150 μm . The lubricant flows from the pump through the filter to the electric driven grease change-over valve. When the pressure in distributing line reaches the required value,

electric driven change-over valve, based on control cabinet command, directs flow in the second line. Lubrication cycle is completed and this is indicated by micro switch of electric indicator. Starting the pump, change-over valve automatically fill with lubricant second line and repeat lubrication cycle. Change-over valve is available in two variants: 24V DC or 230V AC. Desired variant emphasize in ordering. Also, it should be emphasized non-standard tank volume.



Ordering code		10-2120	10-2120-1	10-2120/1	10-2120/1-1	10-2120/2	10-2120/2-1
Lubricant	Oil viscosity	>13 mm ² /s					
	Grease NLGI	≤ 3					
	Temperature	-25 to +80°C					
Working pressure		250 bar		350 bar		400 bar	
Flow		500 cm ³ /min		300 cm ³ /min		150 cm ³ /min	
Electric motor of pump		1,1 kW 3x400V 50Hz 1370 rpm					
Electric motor of change-over valve		24 V DC 1,2 A /230V AC 0,25A					
Switching time of change-over valve		1,0 s					
Electric indicator on change-over valve		max 220 V 5 A					
Ultrasonic level indicator		10 to 30 VDC 200 mA 2xPNP NO/NC					
Tank volume		50 dm ³	80 dm ³	50 dm ³	80 dm ³	50 dm ³	80 dm ³
Height H		682 mm	902 mm	682 mm	902 mm	682 mm	902 mm
Mass		105 kg	110 kg	105 kg	110 kg	105 kg	110 kg



SERBIA
36210 VRNJACKA BANJA
Rudjinci 175/A
tel/fax: +381-36-631-710
E-mail: office@fluidotehnic.com
Web: www.fluidotehnic.com

Matični broj: 06568939
Šifra delatnosti: 2822
PIB: 100918689
Reg. broj: 11506568939
Br. Reg. Upisa: 1-14429-00



EC DECLARATION OF CONFORMITY / DECLARATION ON INSTALLATION

DEKLARACIJA O USAGLAŠENOSTI / DEKLARACIJA O UGRADNJI

We hereby declare that the following products

Izjavljujemo da su sledeći uređaji

Electric driven pumps for grase lubrication (Elektromotorne pumpe za podmazivanje mastima)
Power unit for oil lubrication (Elektromotorni uređaj za podmazivanje uljima)
Pneumatic pumps for lubrication (Pneumatske pumpe za podmazivanje mastima)
Two line dosing distributors (Dvolinijski dozatori)
Progressive doser distributors (Progresivni dozatori)
Change-over valves (Hidraulički razvodnici)
Electric driven change-over valves (Elektromotorni razvodnici)
Pressure and flow valves (Ventili pritiska i protoka)

Are designed and produced in accordance with the safety requirements according to the following regulations:

Projektovani i proizvedeni u skladu sa bezbednosnim zahtevima prema sledećim propisima:

Machinery Directive EC/2006/42
(Mašinska direktiva EC/2006/42)

Low voltage directive EC/2014/35
(Niskonaponska direktiva EC/2014/35)

in accordance with the following standards:

i u skladu sa sledećim standardima:

Safety of machinery - General principles for design

- **Risk assessment and risk reduction EN ISO 12100:2010**

Bezbednost mašina - Opšti principi za projektovanje

- Ocena rizika i smanjenje rizika SRPS ISO 12100:2014

Safety of machinery - Electrical equipment of machines - Part 1: EN 60204-1:2016

Bezbednost mašina - Električna oprema mašina - Deo 1: EN 60204-1:2016

Declaration on installation in the sense of EC Machinery Directive (2006/42/EC) Annex II B

Izjava o ugradnji u skladu sa EC Mašinskom direktivom (2006/42/EC) Anex II B

Product of "FLUIDOTEHNIC" assemble into mechanical devices and equipment. Start-up is not admissible unless it has been verified that the whole equipment, meets the requirements defined in the EC machinery Directive (2006/42/EC)

Proizvod "FLUIDOTEHNIC"-a se ugrađuje u drugu opremu i dodatne uređaje. Pokretanje nije dozvoljeno sve dok i relevantna oprema u koju se ugrađuju ne bude u skladu sa Mašinskom direktivom (2006/42/EC)

The manufacturer undertakes to supply the relevant information of incomplete machine on request to responsible inspector by electronic way. Technical documents of the machine is prepared in accordance with Annex VII, part B Machinery Directive (2006/42/EC)

Proizvođač se obavezuje da će elektronskim putem dostaviti odgovarajuće podatke o delimično završenoj mašini nadležnom inspektor u njegov zahtev. Tehnička dokumentacija je izrađena u skladu sa Anexom 7, deo B Mašinske direktive.

Vrnjačka Banja, 01/02/2017 godine



Šljivić Miroslav, General Manager

The EC Declaration of Conformity is only valid in conjunction with confirmation that the device has been correctly applied, installed, inspected and maintained according to the operating instructions provided. The validity of the declaration will cease in case of any modification and/or supplement not previously approved by "FLUIDOTEHNIC".

Ova deklaracija o usaglašenosti važi samo u slučaju da je uređaj pravilno ugrađen, iskontrolisan i da se koristi i održava u skladu sa uputstvom za rukovanje i održavanje. Važenje izjave prestaje u slučaju bilo kakve modifikacije ili dodatka koji nisu prethodno odobreni od "FLUIDOTEHNIC"-a.



Fluidotehnic d.o.o.

Serbia

36210 Vrnjacka Banja

Rudjinci 175/A

Tel: +381-(0)36-631-710

+381-(0)36-631-711

Fax: +381-(0)36-631-712

www.fluidotehnic.com

office@fluidotehnic.com

© Fluidotehnic doo

02/2018